

# PRE-DEMO & START UP GUIDE

## FOAMSTREAM L1200

weedingtech

This guide has been designed to take operators through the simple checks that must be performed prior to a machine demo to ensure a successful demo is delivered.

It also acts as a refresher guide on how to start the machine.

### THE DAY BEFORE THE DEMO

**1**  
Fill up with:

+ Diesel



+ Petrol



+ Foam



**2**  
Make sure  
the filters  
are clean.

+ Water



+ Foam



+ Diesel



Caution  
Risk of  
explosion

**Do not put petrol in the diesel tank**



Caution  
Risk of  
explosion

### TO START THE SYSTEM

**1**  
Connect the  
water return  
hose.



**2**  
Connect the  
water inlet  
hose.



**3**  
Connect the  
level sensor  
plug.



# PRE-DEMO & START UP GUIDE

## FOAMSTREAM L1200

4

Open the main water valve.



5

Connect the chosen lance.



6

Start engine with the key. If cold, use the choke lever.



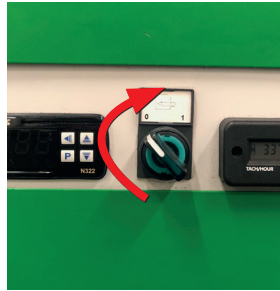
7

Press trigger to bleed the system, cold water and foam will come out.



8

Turn the boiler switch clockwise to ON position. The switch will illuminate green.



9

Keep trigger pressed until tower light comes on, which takes around 60 s. Light on = ready to use



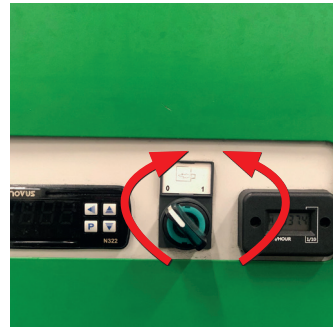
## MACHINE IN USE



To change the lance, release the trigger and use the quick connection to swap.



The boiler is only active when the trigger is pulled.



Toggle the boiler switch to turn it ON and OFF.



Jet cleaning with the power lance can be done with HOT or COLD water.

## TO STOP THE SYSTEM

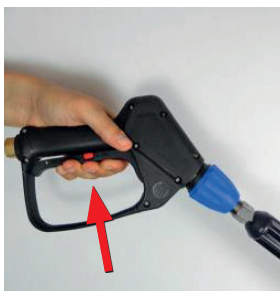
1

Switch the boiler OFF.



2

Optional step: Keep the trigger pressed to cool the boiler down. Wait until the temperature on the thermostat drops below 60°C / 140°F.



3

Turn the engine OFF.

