



Foamstream
— M1200 —

A wide-angle photograph of a park pond. The water is calm and reflects the surrounding greenery. In the background, a city skyline is visible through the trees, including a prominent building with a red facade and a spire. The sky is a clear, pale blue.

QUICK START-UP MANUAL

ENGLISH (North America) – 01/03/2018 – ISSUE 2

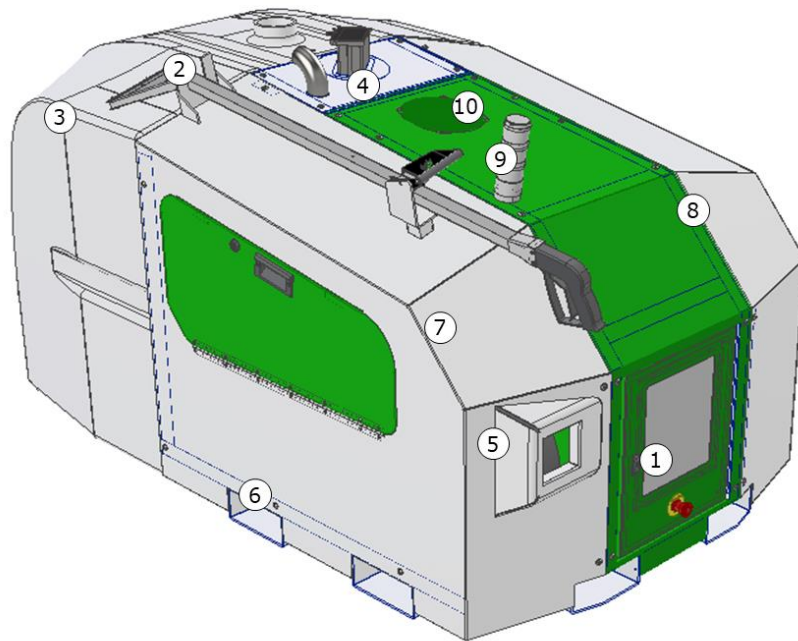


Figure 1 – Perspective view of the M1200

Num.	Description
1	Control panel
2	Lance
3	Water tank
4	Exhaust hood
5	Hose reel orifice
6	Forks entry
7	Left cover panel
8	Right cover panel
9	Traffic lights
10	Hot air extraction fan

Prestart checks

THE FOLLOWING CHECKS MUST BE COMPLETED BEFORE EVERY START UP OF THE M1200. ANY FAULTS MUST BE RECTIFIED BEFORE THE M1200 IS SWITCHED ON.

- ✓ The M1200 water tank is securely attached to the transport vehicle
- ✓ The M1200 is in good condition and panels are closed
- ✓ There are no signs of leaks from any pipe or connection
- ✓ Pipe routes are clear of sharp edges and hot surfaces
- ✓ Air intakes are clear of debris
- ✓ Generator and boiler exhaust are secure and clear of debris and obstruction
- ✓ Water tank is full of clean water
- ✓ Water filter is clean and free from debris
- ✓ Water feed valve is connected and in the 'on' (inline) position
- ✓ The water return pipe and water level sensor are connected
- ✓ Air has been bled from water system (see section 7)
- ✓ Fuel tank is full of clean diesel fuel (derv or gasoil)
- ✓ Boiler fuel filter is clean and free from debris
- ✓ Foamstream® concentrate tank is full of clean Foamstream® concentrate
- ✓ Foamstream® filter is clean and free from debris
- ✓ The Foamstream concentrate has not been subject to temperatures below 40°F and frozen or separated
- ✓ Vent screw on Foamstream® tank filler cap is open
- ✓ Generator engine oil level is correct
- ✓ Pump oil level is correct
- ✓ The lance, hose reel and hose are securely connected and free from damage
- ✓ Lance wear pads are not excessively worn

Start procedure

- ✓ Complete pre-start checks (previous section)

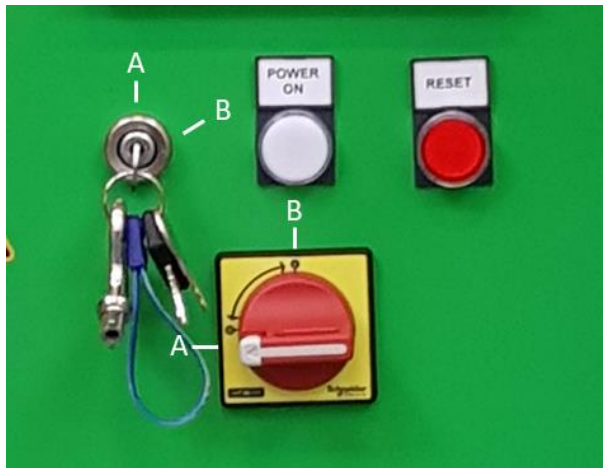


Figure 2 - Detail of the front panel

- ✓ Start the generator by turning the key (item '5' in Figure 2) in a clockwise direction to position 'B', release to position 'A' when the engine starts
- ✓ Turn the isolator switch (item '2' in Figure 2) to position 'A', the PLC screen (item '6' in Figure 2) should illuminate
- ✓ The reset indicator (red light) lights up and 'FAULT' will appear on the top right hand corner of the PLC screen
- ✓ Press the 'RESET' button (red button, item '3' in Figure 2), the 'FAULT' indicator goes out and you should see the screen represented in Figure 3.

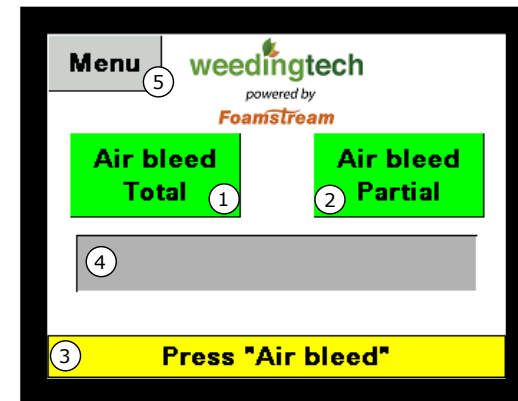


Figure 3 - Start-up screen of the PLC

- ✓ Wait a few seconds before requesting air bleed: buttons '1' or '2' in Figure 3.

If you have disconnected the water tank or are starting for the first time of the day, please use **"Air bleed full"**

If you just took a break or want to perform an additional air bleed, please select **"Air bleed partial"**

When bleeding the machine, the **trigger must be pushed** to allow water to flow out of the lance. Failure to do so will cause the machine to display a fault message.

- ✓ Once button '1' or '2' of Figure 3 is pressed the bleed screen represented in Figure 4 will appear.

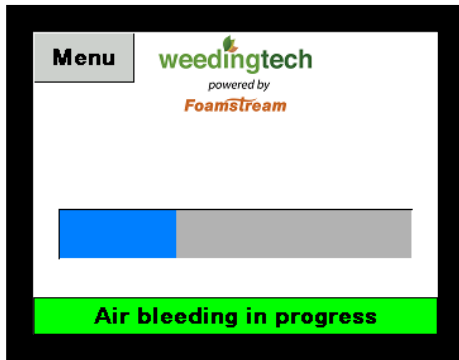


Figure 4 - Bleed screen of the PLC

- ✓ Wait until the purge is completed. A new screen will appear, represented in Figure 5.

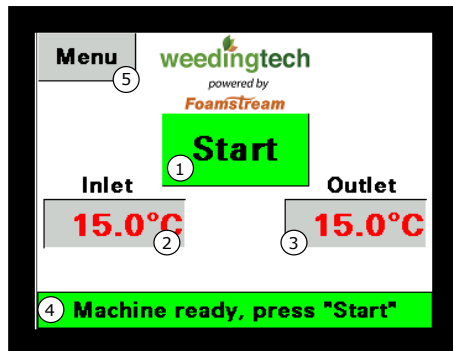


Figure 5 - Start screen of the PLC

- ✓ Press 'START', the button turns green and the screen represented on Figure 6 will appear. The units can be changed to Fahrenheit (language selection on Figure 7).

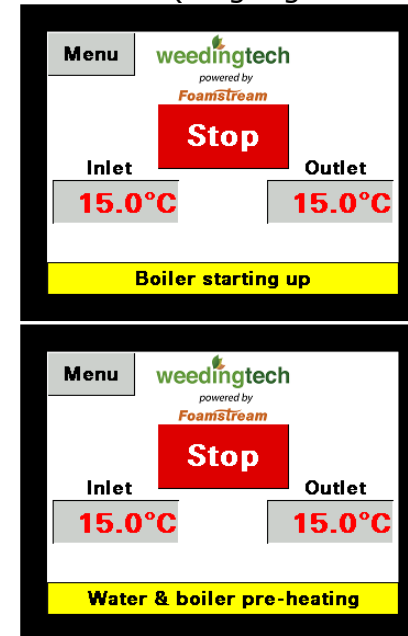


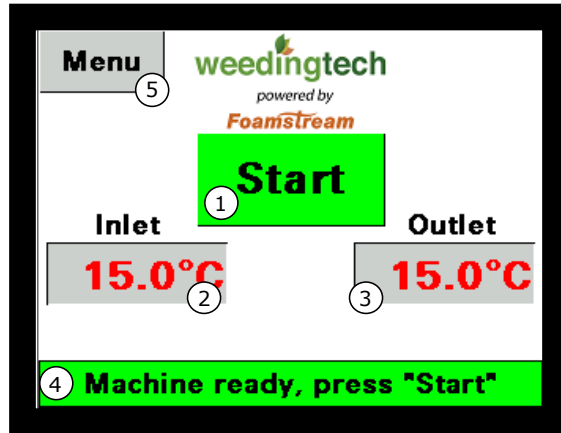
Figure 6 - Running screen of the PLC

- ✓ The amber 'HEATER' light will illuminate and the red 'FAULT' button should go out. This indicates that the boiler has switched on and is heating the water
- ✓ The green 'READY' light will illuminate when the M1200 has reached operating temperature and the system is ready for use (3 – 5 minutes).

AFTER A COLD NIGHT (BELOW 40 DEGREES F), LET THE GENERATOR RUN FOR 15 MINUTES TO WARM UP THE MACHINE BEFORE STARTING THE PUMP OR BLEEDING THE UNIT

Screen and PLC navigation

When the M1200 is ready to start, the screen below will appear.



To access the menu, click on the "Menu" button on the top left-hand side of the screen. The screen below will appear.

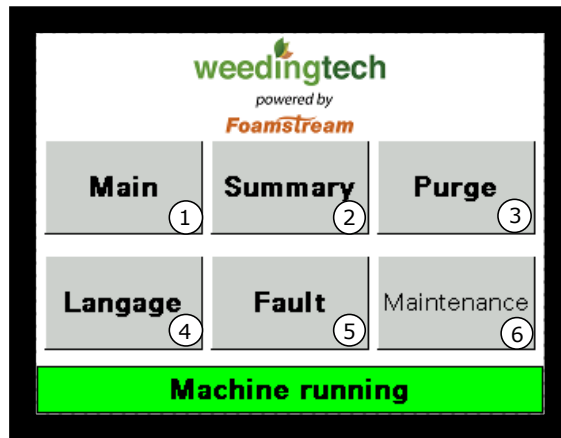
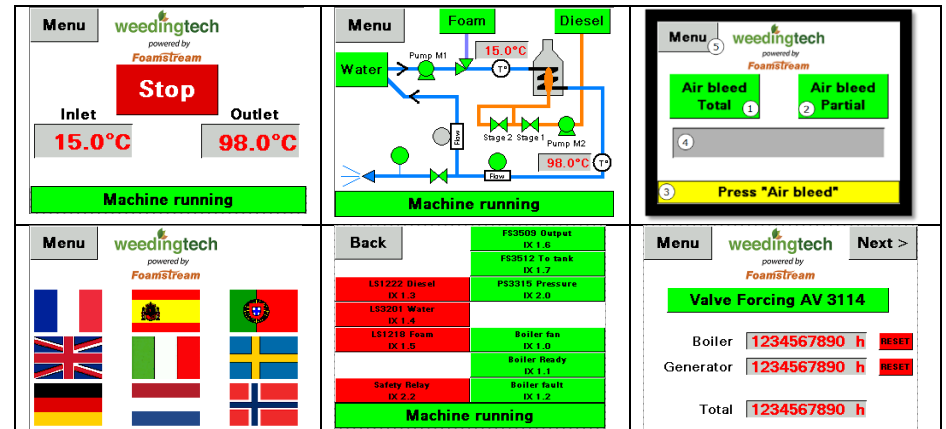


Figure 7 - Menu screen

Num.	Description
1	Return to main page
2	Go to summary screen
3	Purge
4	Language and units selection
5	Fault summary panel
6	Maintenance mode

Users have no need to access pages '5' and '6'. Page '6' is restricted by a password. The screens are summarized in the table below.



During the start-up phase, you will be able to check the operation of the various sensors by going on the "Summary" page.