

# HERBICIDE-FREE WEED CONTROL. REDEFINED.



 **weedingtech**

EPA Est. No. 94946-GBR-1





## HERBICIDE-FREE WEED CONTROL. REDEFINED.



"At Weedingtech we care passionately about the world we live in. It's a beautiful place and the only home we have. We believe in doing our bit to protect it."

"That's why we developed Foamstream: the world's leading herbicide-free weed control technology - so we can make the reduction of herbicide use and the protection of our planet a reality."

"Herbicide legislation, along with public opinion, is changing. More than ever, people want to reduce herbicide use where possible. In fact, we believe that herbicides will be banned in many, if not all public places in the near future. We recognize this will prompt organizations into having to make a change. We developed Foamstream to help those organizations, many of whom we are already proud to call customers, to navigate that change by ensuring there's a herbicide-free alternative that works just as well for them. We understand that making Foamstream effective alone isn't enough - that's why we've also ensured it's economically viable so we can help organizations adopt it more easily."

"Using Foamstream you can control unwanted vegetation in a cost-effective, efficient and safe way, whatever your environmental credentials and regardless of legislation. And you can do so much more with it now too - from chewing gum removal, to street cleaning, to power washing and general sanitization jobs. Foamstream has become a highly versatile green and urban space management system."

"We'd love to help you get involved. If you do, we'll support you every step of the way. We'll do that by continuing to supply the best all-round herbicide-free weed control systems on the market, that can also be used for general green space and urban space sanitization tasks too, while always ensuring that your needs remain at the heart of everything we do."

**Leo de Montaignac** CEO, Weedingtech



## WHAT IS FOAMSTREAM?

Foamstream is the leading herbicide-free solution for controlling unwanted vegetation including weeds, moss and algae. Its patented low-pressure process combines hot water and a biodegradable foam, made from natural plant oils and sugars, making it safe for use around people, animals and delicate environments. With our wand sets, it can also be used for chewing gum removal, power washing and general sanitization jobs too, making it a highly effective, all-round, green space and urban management system.

Committed to ensuring that we deliver the safest, most environmentally friendly products we can to our customers, our foams have been cleared for use as an organic, non-toxic, safe product by the following bodies.



**FiBL**



- + US EPA (Federal)
- + Health Canada (Canada)
- + CDPR (California)
- + Kemi (Sweden)
- + Department of Agriculture (Washington State)
- + Department of Environmental Protection (New York)
- + REACH (UK)
- + Biogrow (NZ)

We are currently going through approval processes in other countries too.

## HOW DOES IT WORK?

The active ingredient in the process is the heat in the hot water. The foam simply acts as an insulating blanket over the top of the hot water, ensuring heat is not lost to the atmosphere.

Using our industry-leading machinery, Foamstream is applied to vegetation at low-pressure and can be used in all weathers. Once it hits the vegetation and covers it, the foam creates a thermal blanket over the vegetation and the water.

## WHY IS IT SO EFFECTIVE?

Just like the roof on your house, the foam stops the heat from the hot water escaping to the atmosphere, trapping it and holding it directly on the plant for an extended period of time. This allows it to work in the most effective way possible.

The heat penetrates the leaf's waxy outer layer, travels down the stem, and in to the roots – killing or severely damaging the plant, causing it to die.

The longer a plant is kept in the kill zone (temperatures above 135°F) the more effective the heat will be at killing the plant. By providing a layer of insulation on top of the water, Foamstream allows the heat in the hot water to be held within the kill zone for longer than any other alternative thermal method.

## WHAT DOES THIS MEAN?

Foamstream provides the most effective way of killing vegetation, meaning fewer treatment cycles are needed per year compared to any other alternative thermal method of weed control. By needing fewer treatment cycles, less labor is needed over the course of the year, reducing overhead costs for customers.

In addition to killing the plant, Foamstream also sterilizes surrounding seeds and spores that haven't yet germinated, helping reduce future weed growth.

By combining the most effective method, the fewest treatment cycles per year and the ability to sterilize seeds and spores, Foamstream offers customers the lowest cost of ownership and operating costs in the alternative herbicide-free space. As Foamstream can also be used for so much more than just weed control, the commercial case for using Foamstream over alternatives becomes highly attractive.

## WHO IS IT FOR?

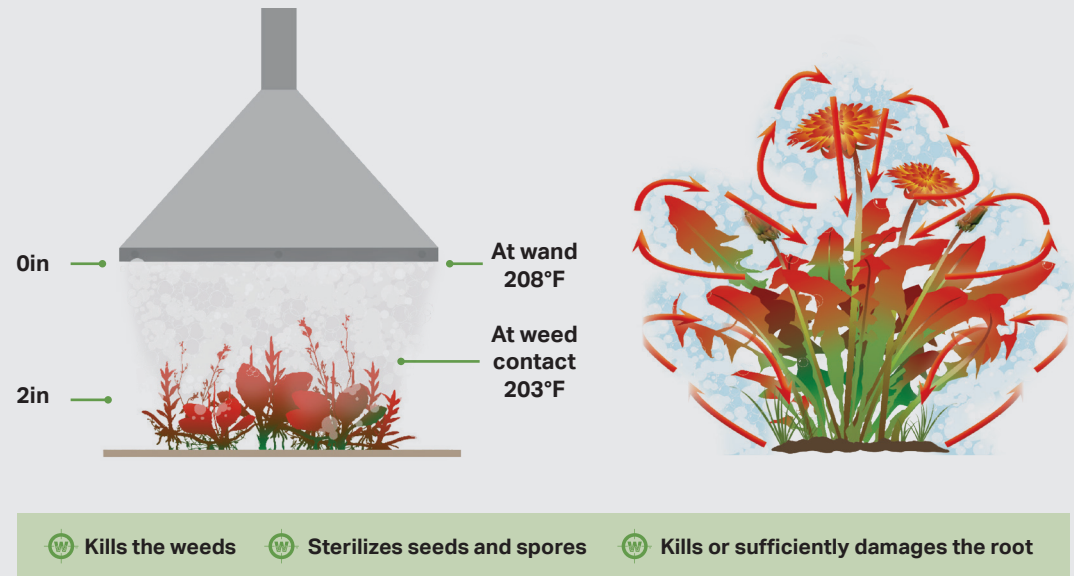
Foamstream is ideal for any company, contractor, council or organization, looking to reduce the use of herbicide from their practices and replace it with the most cost-effective and efficient alternative. It is also for any organization that needs to carry out a wide range of jobs to manage green and urban spaces, including management of artificial surfaces.

It can be safely used in public spaces, on utility sites, or in any space which requires an eco-friendly method of treatment, and poses no threat to people, animals, the environment or the operator.

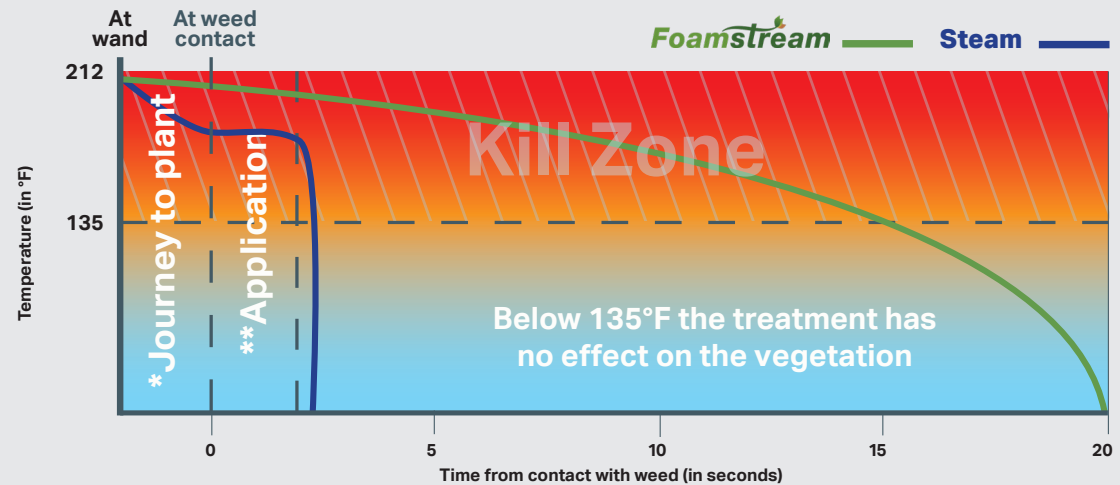


# Foamstream

## HOW FOAMSTREAM WORKS WHEN IT IS APPLIED TO THE PLANT



## FOAMSTREAM TYPICALLY MAINTAINS KILL ZONE TEMPERATURES FOR 6X LONGER THAN OTHER ALTERNATIVES

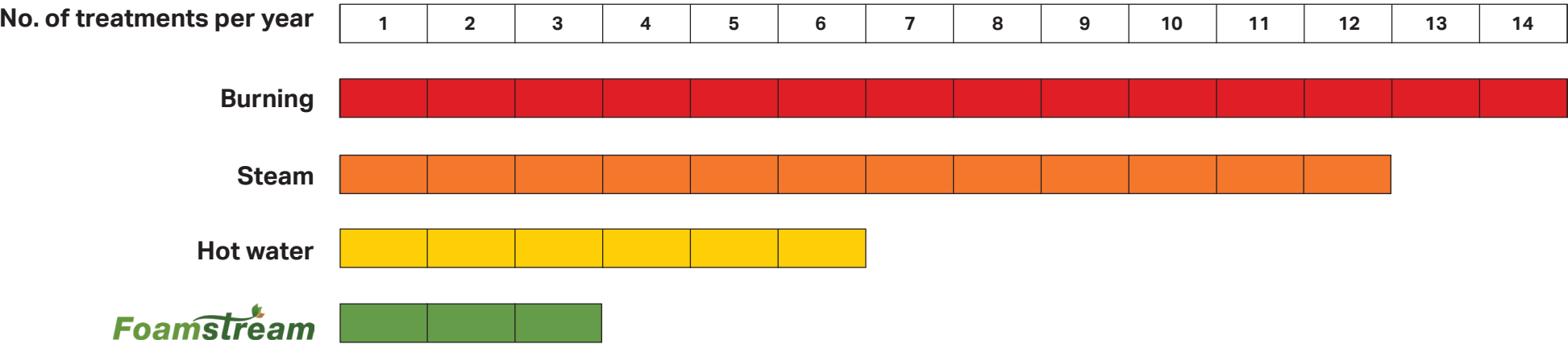


\*Time taken for the steam/Foamstream to travel from wand to weed.

\*\*Time taken to cover the weed with the steam/Foamstream



# HERBICIDE-FREE TREATMENT CYCLES – FOAMSTREAM VS. THE ALTERNATIVES



BEFORE



AFTER



BEFORE



AFTER





By investing in our technology, you will gain the following benefits:

### 1. LOWEST TOTAL COST OF OWNERSHIP OF HERBICIDE-FREE ALTERNATIVES

#### Why?

- + As the most efficient technology in the market, Foamstream ensures you need fewer treatment cycles than any other method in the herbicide-free space.
- + Foamstream reduces regrowth over time by sterilizing seeds and spores.
- + Machine multifunctionality means costs are spread across many areas; from treating unwanted vegetation to all aspects of street sanitization, including gum removal and power washing.

### 4. A COMMITTED, STABLE SUPPLIER FOCUSED ON YOU

#### Why?

- + Financial stability from secure funding means Weedingtech will be here for the long term, to help you now, and in the future.
- + We build long-term relationships with our customers by ensuring we are always there to support them. Our customers are at the heart of everything we do.
- + Despite operating in a relatively new market, Weedingtech has led the herbicide-free sector with integrity since its inception. It has become the trusted supplier to a global network of users, who substantiate its efficacy and endorse its technology.

### 2. MANUAL LABOR COST SAVINGS VS. TRADITIONAL CONTROL METHODS

#### Why?

- + Foamstream can be used in all weathers and on all surfaces allowing effective planning and allocation of labor resources avoiding costly downtime.
- + Foamstream requires significantly fewer treatments per year than other traditional methods such as weed eating.
- + Foamstream eliminates the need for on-going operator certification, full protective clothing and specialist training, helping reduce the additional costs associated with traditional methods of control.

### 5. PROVIDES A SAFE, EFFECTIVE AND VIABLE SOLUTION TO SOLVE YOUR ORGANIZATION'S CHALLENGES

#### Why?

- + With constantly evolving legislation and mounting public pressure, we solve your challenges as you adapt and move away from traditional methods of managing green and urban spaces. We do this by providing the most cost-effective, efficient and environmentally friendly solution to vegetation control and sanitization tasks including street cleaning, gum removal and power washing.

### 3. SAFE FOR PEOPLE (INCLUDING OPERATORS), ANIMALS AND THE ENVIRONMENT

#### Why?

- + Foamstream is an environmentally friendly solution meaning it can be used anywhere without restriction.
- + Our Foamstream consumable is a blend of biodegradable natural plant oils and sugars which is why it is safe to use around people, animals, delicate ecosystems and waterways.
- + Foamstream eliminates any associated risks which come with chemical use or manual weeding practices such as weed eating.





To stay true to our customers and deliver on our promise to them, our business is underpinned by four key pillars – Innovate, Manufacture, Supply and Support – with the customer at the very core of them all.

## INNOVATE

Innovation underpins everything we do. Our world-class in-house research and development team constantly push boundaries. This means we stay ahead of our competitors ensuring our technology provides our customers with the best functionality possible, whatever sector they operate in.

Whether pioneering industry leading technology or moving towards cleaner fuel

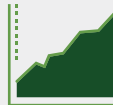
sources, at Weedingtech we look to provide our customers with the best possible value from their machinery. Incorporating innovative technology such as the Internet of things allows us to provide valuable data for our customers about their machinery and operations. We strive to make buying decisions easier by engineering industry-leading technology and optimal performance - delivering unrivalled results every time.

### Innovation comes under three core areas:



#### SECTOR INNOVATION

Committed to providing technology to customers across more than just the municipal and utility sectors, we constantly work towards our next innovation. Agriculture is a key focus for the future. As the legislative bans evolve year on year, we understand the need to provide the best solutions across parts of the agricultural space, such as horticulture and viticulture.



#### DATA INNOVATION

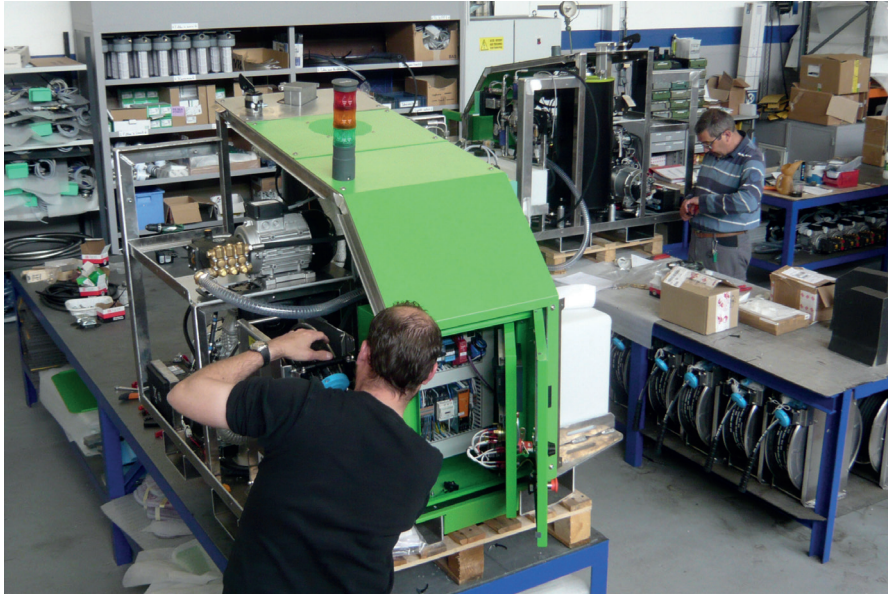
The Internet of things (IoT), a core feature throughout our product range, provides our customers with next-level insight in to their machines and operational activity. Unlocking this data empowers customers to accurately measure their cost of operations and minimize downtime, by increasing operational efficiency. In addition, the IoT provides pre-emptive information on system maintenance and operations, ensuring customers get maximum value from their assets.



#### ENVIRONMENTAL INNOVATION

Committed to driving down the environmental impact of our technology wherever possible, we focus on incorporating leading innovations in our machinery to help move away from fossil fuels and towards more sustainable energy sources.





## MANUFACTURE

As manufacturers, it's critical that we listen to our customers to design and build products that fit their needs and solve their challenges. By doing so, we deliver on our customer promise; to provide the most viable, cost-effective solution for vegetation control and sanitization tasks in the market. We manufacture industry-leading technology by sourcing the highest quality componentry and partnering with leading manufacturers who adhere to the highest standards and quality controls. We manufacture across numerous sites in numerous countries, ensuring we have a robust supply chain that will always deliver the right part, to the right place, at the right time.

**Supply chain:** By partnering with the best manufacturers – we ensure we deliver consistently high-quality end products, guaranteeing our customers gain the best results from their machines over the product's lifetime.

Our global supply chain provides us with scalable flexibility to meet increasing customer demands and delivers full process traceability as our customer base increases around the world.



## SUPPLY

Our global network of clients and distributors speaks volumes about our technology. Whether looking for a solution to your weed control and street cleaning challenges in New Zealand or New York, we have an excellent partner network of tier-one Toro, John Deere and Promodis distributors, amongst others around the world, who can help you make the right decision based on your needs. We understand that a world-class product must be backed up with deep understanding

and experience of both the sector and the technology, along with a shared desire to supply industry-leading machinery and solve customers' challenges.

We appreciate that budget is a big part of any decision-making process. To make our products and our partners as accessible as possible, we have a range of finance packages to help bring you our leading technology in the most affordable way.

# SUPPORT

Exceptional support and service are two key attributes which set companies apart from their competitors. Partnering with tier-one distributors ensures that our customers always receive the very best in service and aftercare support and are kept at the core of our business. We only partner with distributors we know will deliver our promise of responsive support at critical times, ensuring you don't waste time or money waiting for problems to be fixed, or parts to be supplied.

As an end client you can expect the following support from our distribution partners:

- + Deep sector and product knowledge
- + Front line and on-the-road support
- + Tier-one training
- + Stock and rapid dispatch of high demand parts
- + Constant drive to listen to, and meet your needs



At Weedingtech we take special care to ensure you receive world-class aftersales support either directly from us or through our global network of distribution partners.



First line support - provided via telephone.



Territory specific technicians dedicated to you and your machinery.



Regular training and world-class training materials – on-site training and a portfolio of online videos and manuals to guide you through using our technology.



Second line support – a technician(s) will be sent to you on-site if the situation can't be resolved via the telephone.



Superior service quality – all technicians are electrical and mechanical experts in Weedingtech machinery.



12 months parts and labor warranty.



## WHO WE WORK WITH

We work with a diverse network of organizations around the world, from tier-one distribution partners, through to utility companies, municipalities, contractors and private individuals.

Below is a selection of the companies we work with:



# TESTIMONIALS

## Will Wilson

Business Development - Cubex Ltd.  
Canada

"Foamstream fits perfectly into our new focus as a company and we are very much looking forward to getting the product into our customers' hands."

We see Foamstream being one of the flagship lines for Cubex in Western Canada, and we want to get the product to the point that it is the most widely used industry solution for unwanted vegetation control in our area."

## Len Gregory

Co-Owner, Turf Star-Western.  
USA (West Coast)

"Turf Star-Western has great interest in offering environmentally benign solutions to grounds maintenance challenges. We believe that Weedingtech is at the leading edge of this herbicide-free movement offering a viable solution with their patented hot water and environmentally-friendly foam process, Foamstream."

## Alfred Delloiacono

Chief Equipment Inc.  
USA (East Coast)

"NYC & NYS are extremely environmentally conscious and take great precautions towards protecting the parks, private & public schools, municipal areas and universities. Since representing Weedingtech here in NY, the reception has been enormous, and the potential is endless. Foamstream is rapidly gaining popularity because of its herbicide-free approach to eliminating weeds, along with its additional functionality for sanitization tasks such as street cleaning and gum removal. Being people and pet friendly as well as reducing costs, it's a true win-win year-round solution."

## Jordi Senmartí & Mireia Serra

Directors - Vicreu-Senplag.  
Spain

"Weedingtech is the best herbicide-free alternative to chemicals for green areas and has fewer annual treatment cycles than any other alternative method we have considered, including hot water. Using three applications a year, weed coverage has dramatically reduced in treated areas. Weedingtech are a brilliant partner with excellent aftersales support and we highly value their continuous R&D."

## Terry Burns

Senior Contact Manager - idverde.  
UK

"Since using Foamstream we've cut down on all the health and safety issues of strimming and laborious hand weeding we've had to do previously. It's changed the way that we weed hard surfaces, soft surfaces and playgrounds in our borough and means we don't have to use herbicide. It's clean and easy to use and allows us to properly allocate labor which has helped save 75% of our labor time used for previous methods of weed control."

## M. Lemire

MD, Lemire Greenspace  
France

"Foamstream is without doubt the most effective alternative method of weed control, killing 95% of weeds with its first application compared to 50-60% when using hot water."

## Davide Siviero

Founder & Director, Siviero Davide & C. Sas.  
Italy

"Having been keen to find a green alternative to glyphosate we discovered Foamstream, which has delivered great success in terms of our image and the demands of the job."

The results have been astonishing!

Unlike chemical treatments, the effect was visible almost immediately and fewer treatments have been needed since due to dramatically reduced regrowth.

Furthermore, being safe for all operators to use in any public area, Foamstream has been a huge advantage when allocating and arranging labor. This has saved time and money.

We're very pleased with Weedingtech and plan to expand the fleet, satisfying more and more customer requests."



# OUR MACHINERY



The L12 is our entry level plug and play Foamstream system. Operator driven, it relies on the operator to run it, rather than Weedingtech's proprietary Foamstream Software System (unlike the M600 & M1200).

With a rapid start-up time of 30-60 seconds the machine has full trigger functionality and is very easy to use. Its diesel and gasoline dual-fuel source powers it's 3.2 gal. per minute flow rate, matching that of our M1200 system. Its robust design is frame mounted with four fork-lift points and can be used on a variety of different vehicles including UTVs and pickups. The L12 includes additional functionality for street cleaning and a new rinse-mode feature providing the operator with an option to use the machine with just water and no foam at high or low pressure.

## Machine measurements

Height	3' 6-1/4"
Width	3' 5"
Width + 206 gal. water tank	4' 1-1/4"
Depth	3' 2-1/2"
Depth + 206 gal. water tank	6' 1"
Weight dry unit	617 lb.
Weight wet unit	739 lb.
Total wet weight (unit + 206 gal. water tank)	2657 lb.
Engine	Honda GX390, 230 V 60 Hz 6 kVA
Emissions class	CARB Tier 4 Final Compliant
Boiler	324,153 BTU diesel powered, 12 V 50 Hz single stage, 2901 psi steel coil (1/2")
Boiler efficiency	90 %
Wand weight	5.5 lb.
Hose length	66 ft.

## Operating measurements

Internal operating temperature	221 °F
Operating temperature at wand	208 °F
Over-temperature cutout	248 °F
Weed control wand pressure after nozzle	14.5 psi. (atmospheric)
Pressure at start up	435 psi.
Standard cleaning wand pressure	1233 psi.
Weed control wand pressure before nozzle	174 psi.
Unloader valve	adjusted around 1958 psi.
Safety valve	adjusted over 1958 psi. to protect the hydraulics in the case of a unloader valve failure
Flow rate at wand (per minute)	3.2 gal.
Operating noise level (3.3 ft.)	< 85 dB
Operating noise level (16.4 ft.)	< 78 dB

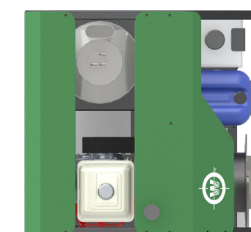
## Consumable measurements

Gasoline tank capacity	1.6 gal. (5.1 hours)
Gasoline consumption	0.3 gal. / hour
Diesel tank capacity	9.2 gal. (4.4 hours)
Diesel consumption	2.1 gal. / hour
Engine oil	10w30 mineral (1.2 quarts)
Pump oil	10w40 (10 oz.)
Foam can capacity	5.7 gal.
Foam can gross weight	55 lb.
Foam consumption	0.47 gal. / hour
Foam storage temp. required	41-104 °F

## Output per hour\*

Low vegetation density	7535 sq. ft.
High vegetation density	4521 sq. ft.
Time taken to treat 1 acre (hours)	<6

\*Coverage figures are based on treating vegetation growth on hard surfaces in an urban environment.



# Foamstream — M600 —

The Foamstream M600 is a smaller, more compact and more lightweight design than the M1200 – suitable to mount on a range of vehicles including a variety of UTVs. With a flow rate of 1.59 gallons per minute, the M600 is particularly well-suited to smaller-scale jobs and harder to reach areas in inner city and rural environments. Powered by propane to help reduce noise and carbon emissions. It also includes additional functionality for sanitization, street cleaning, gum removal and power washing.

## Machine measurements

Height	3' 11-1/4"
Width	3' 3-1/2"
Width + integrated tank	4' 1-2/3"
Depth	2' 7-1/2"
Depth + integrated tank	3' 7-3/4"
Weight dry unit	574 lb.
Weight wet unit	684 lb.
Generator	LPG powered 230V 60 Hz pure sine wave inverter generator
Emissions class	EPA/CARB compliant
Boiler	164,000 BTU diesel powered, 230V 60 Hz with dual-stage pump, 2900 psi 1/2" stainless steel coil.
Boiler efficiency	93%
Wand weight	5.5 lb.
Standard hose length	98 ft.

## Operating measurements

Internal operating temperature	194 - 230 °F
Operating temperature at wand	208 °F
Over-temperature cutout	248 °F
Weed control wand pressure after nozzle	15 psi (atmospheric)
Cleaning wand pressure	290 - 363 psi
Flow rate at wand (per minute)	1.59 gal.
Operating noise level (3.5 ft.)	77 dB
Operating noise level (16.5 ft.)	68 dB

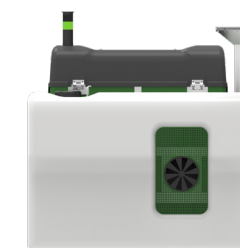
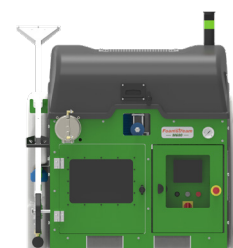
## Consumable measurements

Propane tank capacity	Subject to availability
Diesel tank capacity	9.25 gal.
Generator / pump oil	SAE 5W40
Generator oil capacity	20 oz.
Pump oil capacity	10 oz.
Water tank capacity	71 gal.
Foam tank capacity	4 gal.
Foam jug – gross weight	57 lb.
Foam capacity weight	55 lb.
Foam storage temp. required	41-104 °F

## Output per hour\*

Low vegetation density	4521 sq. ft.
High vegetation density	3014 sq. ft.
Time taken to treat 1 ha (hours)	<24

\*Output is dependent on the density, surface type and climate





# FoamStream — M600H —

Introducing the FoamStream M600H, our first hybrid unit. Combining the efficiency of electric power with our industry leading, hyper efficient boilers, the M600H is suitable to mount on a wide range of municipal vehicles, including a large variety of UTVs. With a flow rate of 1.59 gallons per minute, the M600H is particularly well-suited to smaller-scale jobs and harder to reach areas in inner-city and rural environments. The introduction of a battery unit has further reduced noise emissions, making this our quietest machine yet.

## Machine measurements

Height	3' 11-1/4"
Width	3' 3-1/2"
Width + integrated tank	4' 1-2/3"
Depth	2' 7-1/2"
Depth + integrated tank	3' 7-3/4"
Weight dry unit	Small battery - 530 lb. Large battery - 607 lb.
Weight wet unit	Small battery - 596 lb. Large battery - 673 lb.
Boiler	48 kWh diesel powered, 230V 50 Hz with dual-stage pump, 200 bar 1/2" stainless steel coil
Emissions class	Electric
Battery	Small battery - Li-ion, 3032Wh (10.8V, 280.8 Ah). (Super Charger available) Large battery - Li-ion, 6064Wh (10.8V, 280.8 Ah). (Super Charger available)
Boiler efficiency	93%
Wand weight	5.5 lb.
Hose length	98 ft.

## Operating measurements

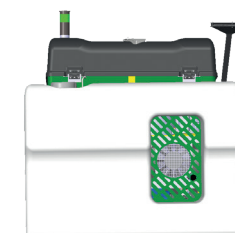
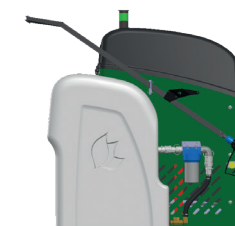
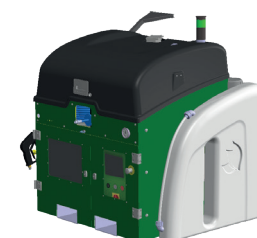
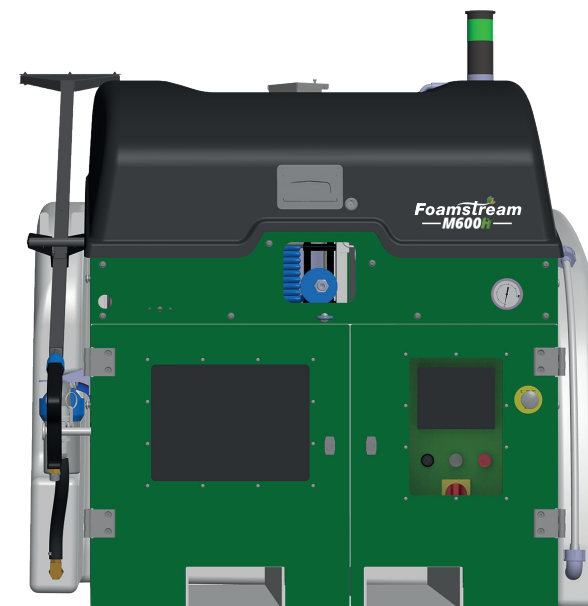
Internal operating temperature	208 °F
Operating temperature at lance	208 °F
Over-temperature cutout	248 °F
Weed control wand pressure	14.5 psi (atmospheric)
Cleaning wand pressure	290 – 363 psi
Flow rate at wand (per minute)	1.59 gal.
Operating noise level (1 m)	< 60 dB
Operating noise level (5 m)	< 55 dB

## Consumable measurements

Battery run time	Yeti 3000: 2.5 - 3 hours Yeti 6000x: 4.5 - 5 hours
Battery charging time	Yeti 3000: 5 hours Yeti 6000x: 10 hours
Diesel tank capacity	9.25 gal.
Pump oil capacity	10 oz.
Water tank capacity	71 gal.
Foam tank capacity	4 gal.
Foam jug - gross weight	57 lb.
Foam capacity weight	55 lb.
Foam storage temp. required	41-104 °F

## Output per hour : 100% coverage

Low vegetation density	4521 sq. ft.
High vegetation density	3014 sq. ft.
Time taken to treat 1 acre (hours)	< 24



## WHICH MACHINE IS RIGHT FOR YOU? COMPARE OUR RANGE

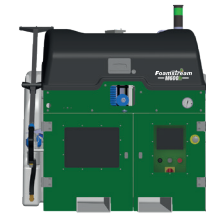
**Foamstream**  
— L12 —



**Foamstream**  
— M600 —



**Foamstream**  
— M600H —



Flow Rate	3.2 gal./m	1.59 gal./m	1.59 gal./m
Foam Usage	0.47 gal./h	0.44 gal./h	0.44 gal./h
Fuel Source	Diesel and gasoline	Diesel and propane	Diesel and electric
Additional Hose Length	+ 197 ft.	+ 197 ft.	+ 197 ft.
Battery Option	N	N	Y
HMI Screen / FSS*	N	Y	N
Super High Pressure	Y	N	N
Rinse Mode*	Y	N	N
UTV Compatible	Y **	Y	Y

### What is Foamstream Software System?

Weedingtech's Proprietary Foamstream Software System: (Incorporated into the M600 & M1200)

- + Automated temperature at wand
- + Level sensors for Foamstream diesel and water
- + Automatic safety mode
- + Service notifications
- + Boiler diagnostics
- + Relay diagnostics
- + Flow switch diagnostics
- + Pressure switch diagnostics

\*\* L12 requires specialist UTVs.

**Rinse Mode\*** - machine option to use water without foam

**FSS\*** - Foamstream Software System



# FOAMS

The crucial part of our patented Foamstream process is our foam. This is made from natural plant oils and sugars.

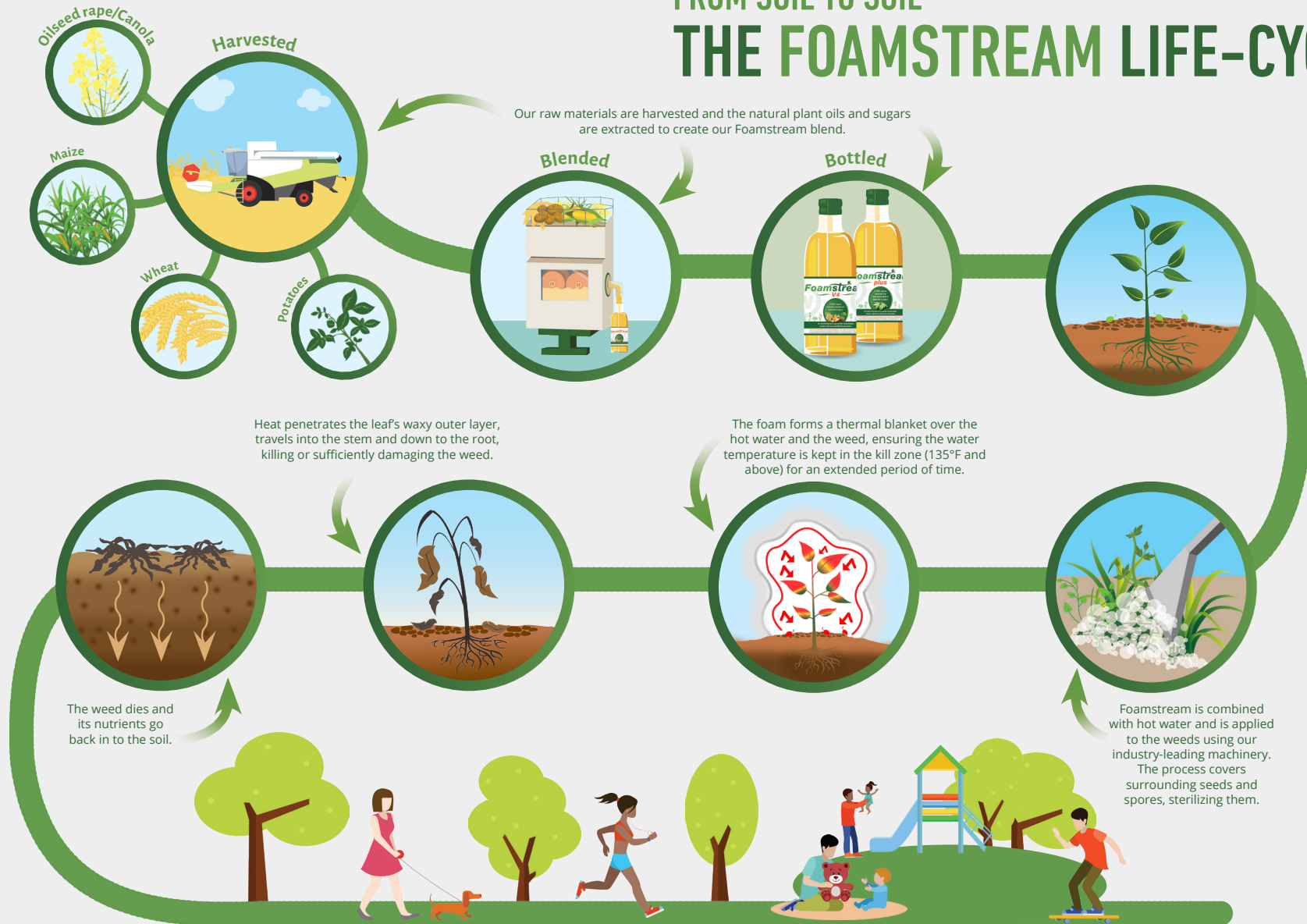
**Foamstream**  
**V4**

Our original foam blend made from a combination of ingredients including wheat, maize, coconut oil, canola oil and potatoes.





# FROM SOIL TO SOIL THE FOAMSTREAM LIFE-CYCLE



Ⓢ A SAFE AND SUSTAINABLE SOLUTION FOR A GREENER WORLD. Ⓢ



With our customers as our core focus we continually strive to provide additional value from our technology. We ensure customers get the most from their machines by engineering a product range that helps with as many green and urban space management tasks as possible.

Our Foamstream Clean wand range has been developed with that in mind. To ensure that your machines can be used beyond the traditional season for vegetation control, we've designed other wands that tackle all-manner of sanitization tasks such as street cleaning, gum removal and power washing. Ergonomically designed with the end user in mind, they feature interchangeable, quick connect heads for simple, fast wand changeover.

### THE BENEFITS OF USING FOAMSTREAM AS A CLEANING SOLUTION:

Foamstream allows organizations and individuals to save additional costs on capital expenditure by providing one machine that can effortlessly transition from weed control to cleaning tasks and back again, wherever they are without the need for bringing in different machinery to carry out different job requirements.

With highly effective cleaning functionality, the ability to control temperature plus comparably low surface degradation when compared to other conventional high-pressure cleaning systems, Foamstream Clean provides the user with a unique and exceptional solution to urban cleaning.



In addition to our range of wands, we also have a range of optional extras that can be added to your machine.

To find out more about the full range of Weedingtech accessories, please get in touch.



This area has been treated by

# Foamstream

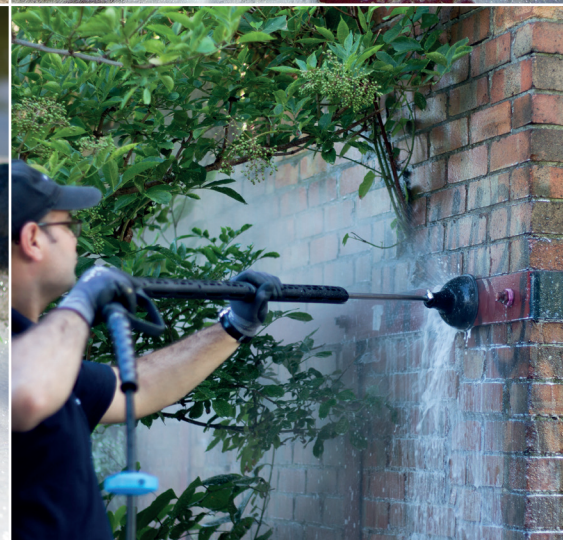
Herbicide-Free Weed Control

A safe & effective, eco-friendly alternative to chemical herbicides with proven results!



Helping your business grow

Find out more about the future of weed control:  
[www.turfcare.ca/foamstream](http://www.turfcare.ca/foamstream)





To find out more about the leading technology for managing green and urban spaces, and how it can benefit your organization, please get in touch.


---


 WeedingTech

 @WeedingTech

 @weedingtech

 [www.linkedin.com/company/  
weeding-technologies-limited](https://www.linkedin.com/company/weeding-technologies-limited)

 Weedingtech Ltd  
Unit 2 – Westpoint Trading Estate  
Alliance Road  
London W3 0RA

 +44 203 909 0050

[www.weedingtech.com](https://www.weedingtech.com)

  
**weedingtech**

Every effort has been made to ensure that the information in this brochure is as current as possible at the time of printing. Due to the nature of our constant innovation geared to our customers' demands, details of the specifications may be changed at any time, without notice. Please ensure you contact your distributor to confirm all details are correct.