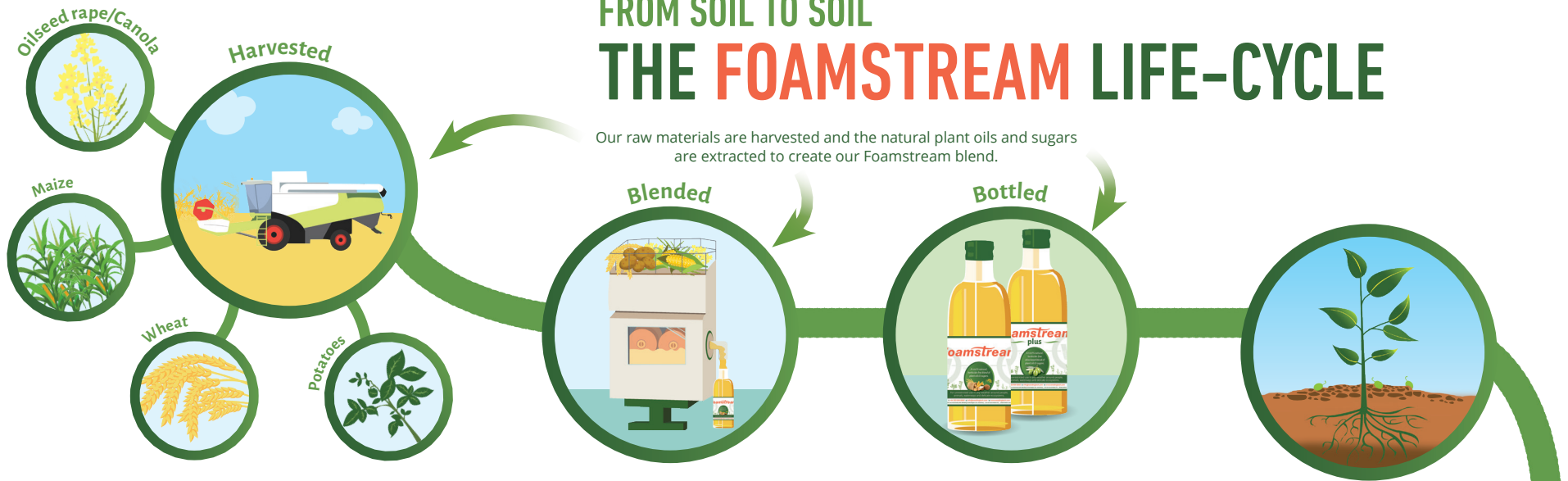


FROM SOIL TO SOIL THE FOAMSTREAM LIFE-CYCLE

Our raw materials are harvested and the natural plant oils and sugars are extracted to create our Foamstream blend.



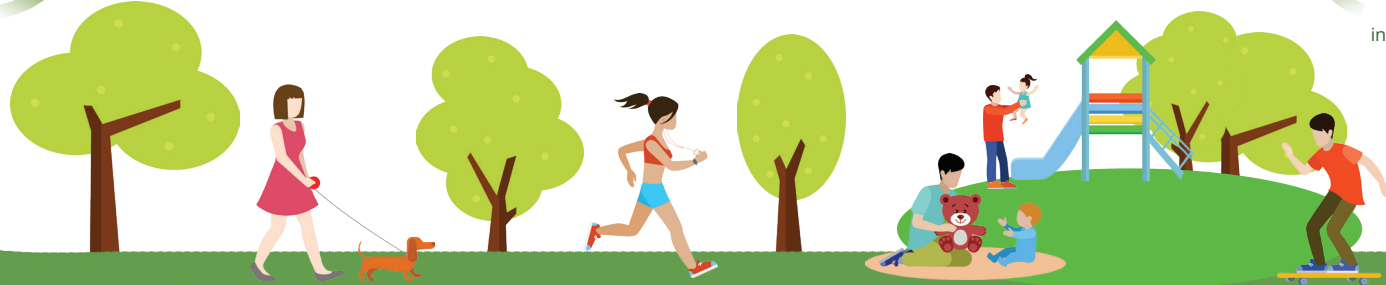
Heat penetrates the leaf's waxy outer layer, travels into the stem and down to the root, killing or sufficiently damaging the weed.

The foam forms a thermal blanket over the hot water and the weed, ensuring the water temperature is kept in the kill zone (57°C and above) for an extended period of time.



The weed dies and its nutrients go back in to the soil.

Foamstream is combined with hot water and is applied to the weeds using our industry-leading machinery. The process covers surrounding seeds and spores, sterilising them.



Ⓢ A SAFE AND SUSTAINABLE SOLUTION FOR A GREENER WORLD. Ⓢ

weedingtech